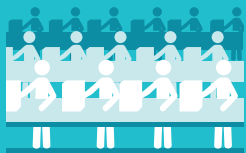


COMMUTING SAFETY FOR CAMBODIAN WORKERS

THE PROBLEM



MORE THAN 700,000 WORKERS
COMMUTE TO AND FROM GARMENT
AND FOOTWEAR FACTORIES EACH DAY.



Road crashes not only impact the lives of workers, but also the lives of the **2 million family members** they support, as well as the productivity of the factories which rely on their labor. A 2016 survey of 233 factories in Cambodia found that a total of **7,619 days were lost** due to crashes over the past 12 months.



While there have been a number of interventions being implemented to address these issues, threats to the safety of factory workers during their daily commutes remain high due to dangerous road user behaviors, unsafe transportation, hazardous road environments, and inadequate enforcement of traffic laws. In 2019, commuting garment and footwear factory workers were involved in **698 road crashes**, equal to **more than 58 crashes per month**. Tragically, 15 workers died and 138 sustained serious injuries.

PROGRAM OBJECTIVE

To improve commuting safety for Cambodian garment and footwear workers by strengthening linkages, promoting collaboration, and increasing joint actions between stakeholders.



PROGRAM TARGET

The program will target 30 factories along main and national roads, primarily in Phnom Penh, Kandal, Kampong Speu, and other high-risk provinces in Cambodia.



PROGRAM COMPONENTS AND KEY ACTIVITIES



**CONDUCT RESEARCH TO PROMOTE
EVIDENCE-BASED POLICY AND PRACTICE CHANGE**

- Explore the impact of unsafe worker commutes and possible interventions
- Disseminate research via policy briefs, media forums, high-level meetings and national workshops
- Facilitate dialogue with government and industry stakeholders, including trade unions and associations



**COLLABORATE WITH INDUSTRY STAKEHOLDERS,
CIVIL SOCIETY ORGANIZATIONS, TRADE UNIONS**

- Engage with the Better Factories Cambodia Transportation Working Group members to promote industry collaboration and coordinate actions
- Share experience and best-practices between stakeholders
- Host trainings with trade unions and driver associations and collaborate to identify and pilot new initiatives



**INCREASE THE REACH OF SAFETY INTERVENTIONS
TO 30 TARGET FACTORIES**

- Establish and train road safety working groups at target factories
- Develop and implement a Commuting Safety Policy
- Organize information sessions targeting workers and drivers
- Implement 'Speak Up' campaigns to raise awareness of commuting safety risks



HOW YOU CAN HELP

- **Brands and buyers:** adopt and enforce road safety policies
- **Trade unions and driver associations:** establish commuting safety as a high-priority issue and encourage speaking up about unsafe transport
- **Media:** regularly publish news and advocate for commuting safety policy and practice change
- **Factories:** increase investment in worker safety and promote road safety at factories
- **CSOs and private sectors:** coordinate efforts to reinforce workers' safety in corporate social responsibility programs